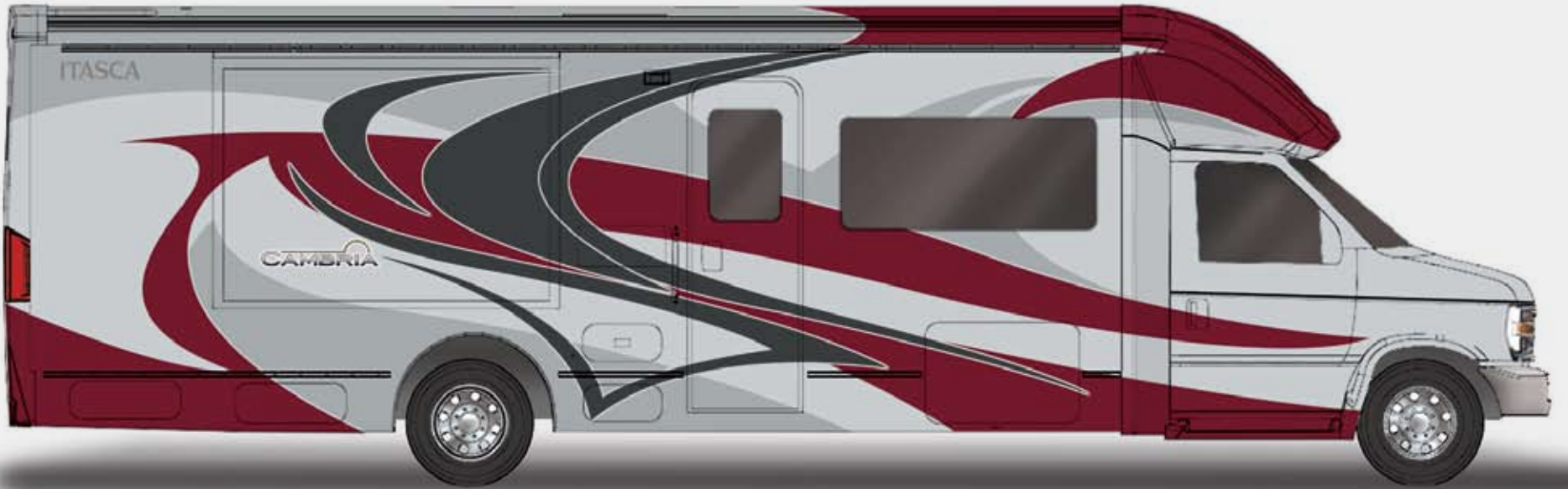


2009 *Cambria*



Competition Red Full-body Paint



Dorado Gold Pearl Metallic



Medium Opal Metallic



Sandstone Full-body Paint



Denim Full-body Paint

2009 Cambria

Interior Decor

Weights & Measures	28B	30C
Length	29'7"	31'7"
Exterior Height	10'5"	10'5"
Exterior Width	7'11"	7'11"
Exterior Storage (cu. ft.)	15.6	12.6
Awning Length	19'	14'
Interior Height	6'5"	6'5"
Interior Width	7'6"	7'6"
Freshwater Capacity w/Heater (gal.)	33	33
Holding Tank Capacity - Black/Gray (gal.)	27/35	27/35
LP Capacity (gal.)	18	18
Fuel Capacity (gal.)	55	55
GCWR (lbs.)	20,000	20,000
GVWR (lbs.)	14,500	14,500
GAWR - Front (lbs.)	5,000	5,000
GAWR - Rear (lbs.)	9,500	9,500
Wheelbase	200"	220"

Ford® E450 Chassis
305-hp 6.8L Super-Duty V10 SEFI Triton® engine
TorqShift™ 5-speed automatic transmission
115-amp. alternator
4-wheel ABS
Trailer hitch: 5,000-lb. drawbar/350 lbs. maximum vertical tongue weight and wiring w/7-pin connector
Stainless steel wheel liners

28B	30C	Optional Equipment
0	0	Rear auxiliary air springs
0	0	Automatic hydraulic leveling jacks, front and rear
0	0	Stylized aluminum wheels



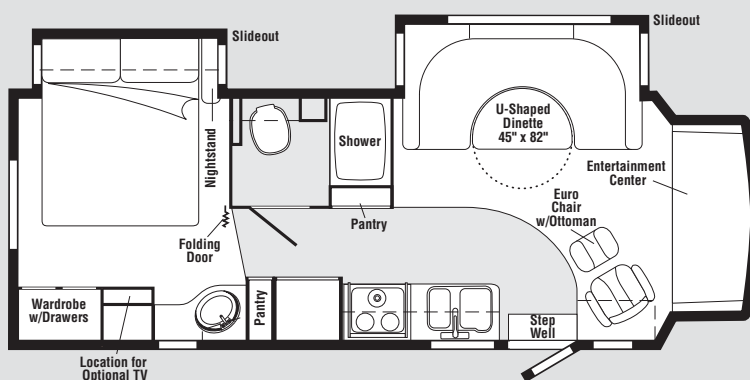
Desert Shadows / UltraLeather Pine Cone



Silverstone / Optional UltraLeather Putty

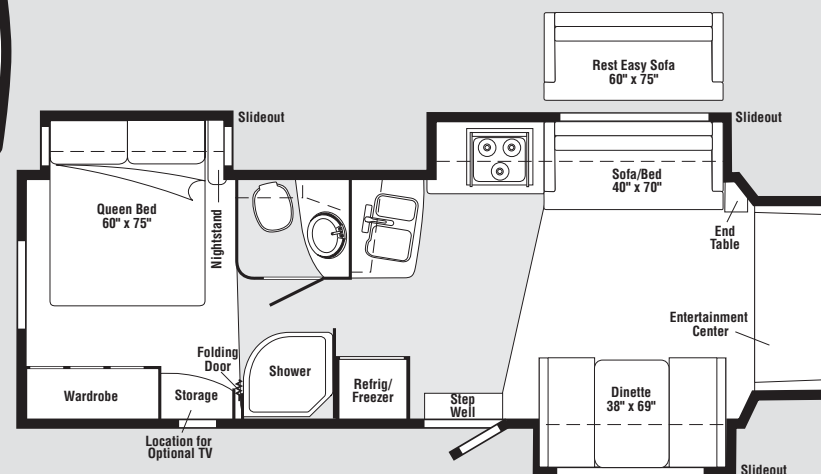


Remington / Optional UltraLeather Steerhide



28B

30C



		BEDSPREAD	
MAIN	ULTRALEATHER	ACCENT	CARPET
		ACCENT	



Honey Cherry



Belmont Maple